

A photograph of a white ambulance with blue and red stripes parked on a sandy beach at sunset. The sun is low on the horizon, creating a warm orange and yellow glow. The ambulance is the main subject, with its side door open. The background shows the ocean and a clear sky.

Charlestown Ambulance-Rescue Service

2019 Annual Report

Andrew D. Kettle
Chief of Department
www.charlestownrescue.org

Table of Contents

Page 1	Front Cover
Page 2	Table of Contents
Page 3	Mission and Vision
Page 4	Chief's Message
Page 5	Organizational Chart
Pages 6-7	Community Activities
Pages 8-9	Open House
Page 10	Training Center
Page 11	Social Media
Pages 12-15	Department Statistics
Page 16	Back Cover



Mission and Vision

MISSION

Charlestown Ambulance-Rescue Service exists to safeguard the quality of life in our community through the provision of outstanding ambulance-based pre-hospital health services, responding in particular to medical emergencies and to the special needs of our most vulnerable through mobile intensive care.



VISION

Charlestown Ambulance-Rescue Service strives to meet the changing needs of the community for pre-hospital care and believes that by the timely application of the advances of both the art and science of pre-hospital medicine to the practice of emergency medical services, we can decrease suffering, improve the health of the community and save lives.

Chief's Message

It has been many years since our department compiled an annual report. It is my honor and pleasure to present the Charlestown Ambulance-Rescue Service 2019 annual report. As a team we have worked on this report and it has been an opportunity to review the many great accomplishments we've had, including a balanced budget and re-negotiated contracts for a significant savings. We've also seen significant progress in our reduction of debt.

Our annual report includes statistics which show a 23.9% increase in our call volume in 2019. Our crews have treated the vast majority of these patients without the need of mutual aid. On the rare occasion that a crew is unavailable, or both of our ambulances are already committed to other calls, our mutual aid partners from South Kingstown, Westerly or Hope Valley respond to assist. Charlestown's Police and Fire Departments regularly respond along with us and are a huge asset for our team.



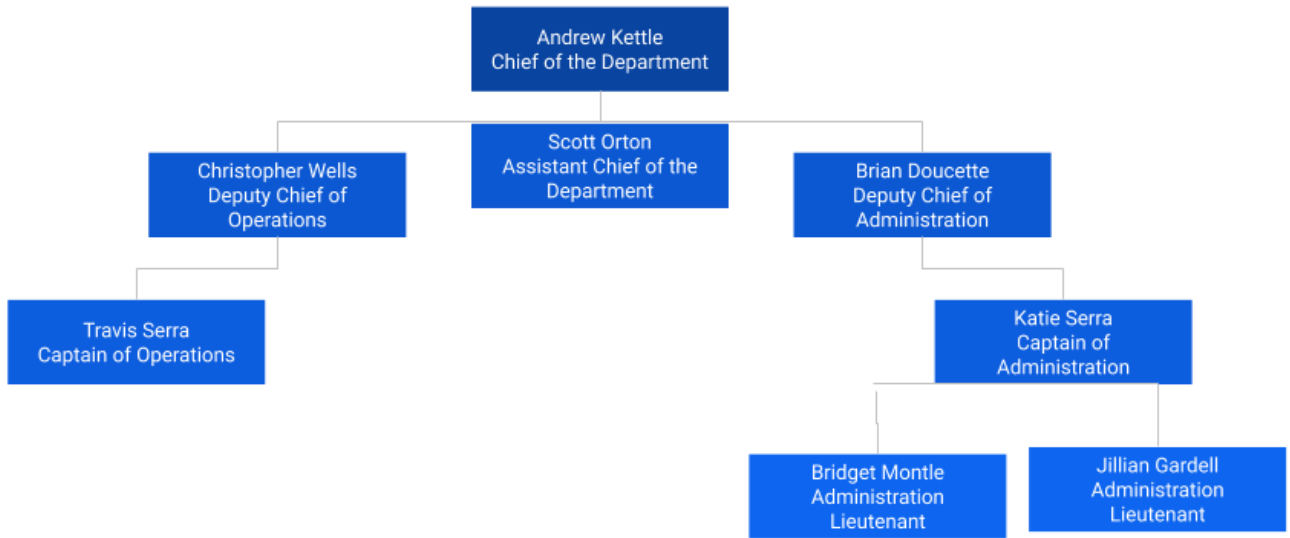
During the past year, we've opened our doors to the public and invited them to an EMS Week open house held on May 25, 2019. It was a resounding success and our 2nd annual open house is scheduled for May 23, 2020. We've also utilized our social media accounts and website to provide the public a glimpse of what we do on a regular basis.

Another highlight of this past year has been our accreditation as a teaching institution by the Rhode Island Department of Health, Center for Emergency Medical Services. We are now accredited to teach our own EMS programs. This is a huge benefit to us and the community at large as our EMS providers will now be trained here in town by the providers that work here in town. Our providers and team are our biggest asset and include folks who are career physicians, physician's assistants, APRNs, RNs, teachers, students, police officers, firefighters, and a host of other career oriented individuals.

In closing, it is a great honor and privilege to serve as Chief of Charlestown Ambulance-Rescue Service. We are so fortunate to enjoy the support and respect of the Town Council, Town Administrator, Town staff, and most importantly the residents and visitors of the Town of Charlestown.

Andrew D. Kettle, NRP, EMS I/C
Chief of Department

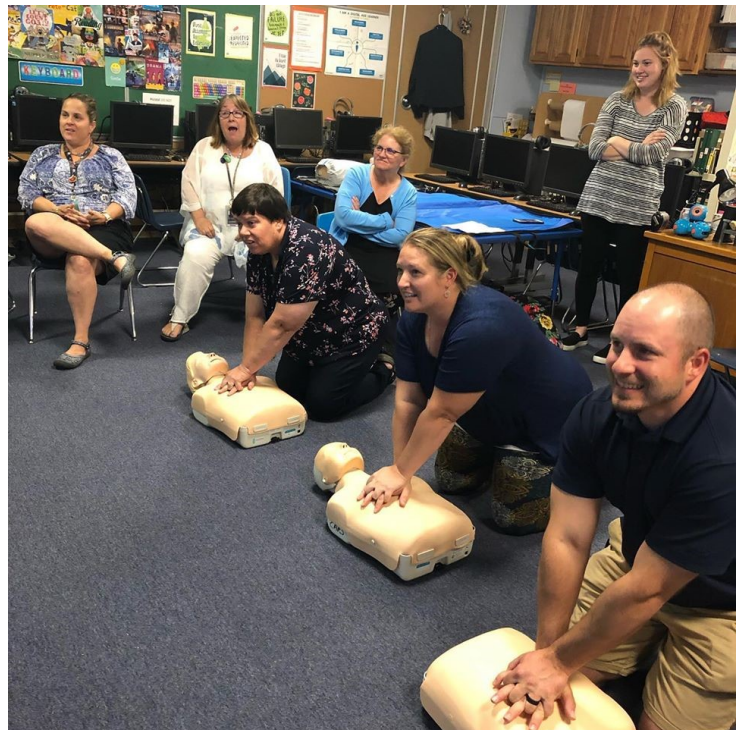
Organizational Chart



In the Community...

Our members enjoy the privilege to participate in many events throughout our town and region. In the past year we have participated in:

- RICAN Annual New Year's Day Polar Plunge
- Parks and Recreation Easter Egg Hunt
- Westerly Hospital First Responders Day
- Chariho Middle School Career Fair
- EMS Week open house
- Memorial Day Parade
- Hands only CPR with the Town Council
- CPR Class for Charlestown Elementary School
- 24/7 AED enclosure installations
- Training with town lifeguards
- Special Olympics Torch Run
- Senior Center Luncheons
- Annual Karl Kenyon Smokey Bear Parade
- Annual Westerly-Pawcatuck Clergy Associations First Responder Blessing
- Burlingame Family Festival
- Parks and Recreation Halloween Trunk or Treat



In the Community...



Open House

This year we held our first annual Open House here at Charlestown Rescue! Our fun filled day included touch a truck, rescue demonstrations and more! Hundreds of members of our community participated in activities such as CPR instruction and make your own first aid kit. We performed a vehicle extrication demonstration to show how we safely remove our patients from a motor vehicle accident. DMAT was present to share their stop the bleed campaign to teach the public how to control extensive bleeding. Rhode Island State Police brought their rollover simulator to prove the importance of seatbelt use while in a vehicle, especially if it were to rollover. Our first annual Open House was a great success and we will host our second annual Open House on Saturday, May 23, 2020!



Open House



Training Center

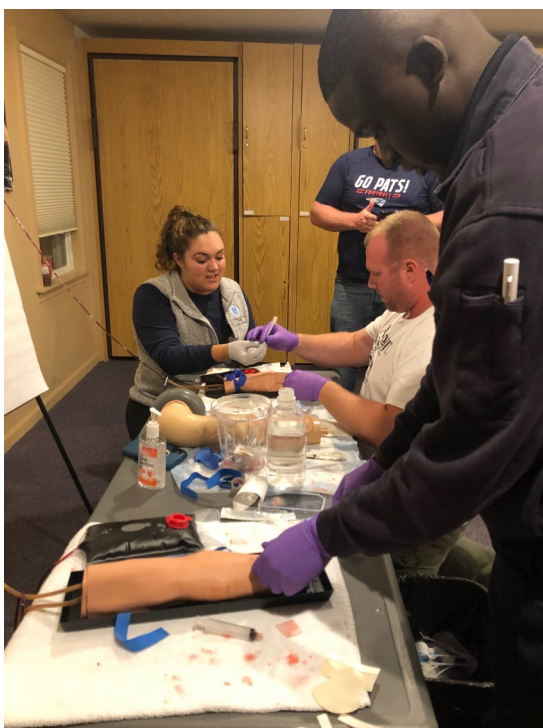
Charlestown Rescue is a RI Department of Health, Center for Emergency Medical Services accredited training center; accredited to teach Emergency Medical Responder, Emergency Medical Technician, and Advanced—EMT classes.

Additionally, we are an American Heart Association Training Site approved to teach a myriad of American Heart Association CPR and First Aid programs. These programs are available to the community as requested.

We also have rapidly become a premier training site for Water Rescue programs. We have partnered with Ocean Rescue Systems International, a Portland, Maine company. We host them regularly throughout the year for their Public Safety Rescue Swimmer, Fast Rescue Craft Operations, and Maritime Search programs.



LEARN CPR
You Can Do It!



Social Media



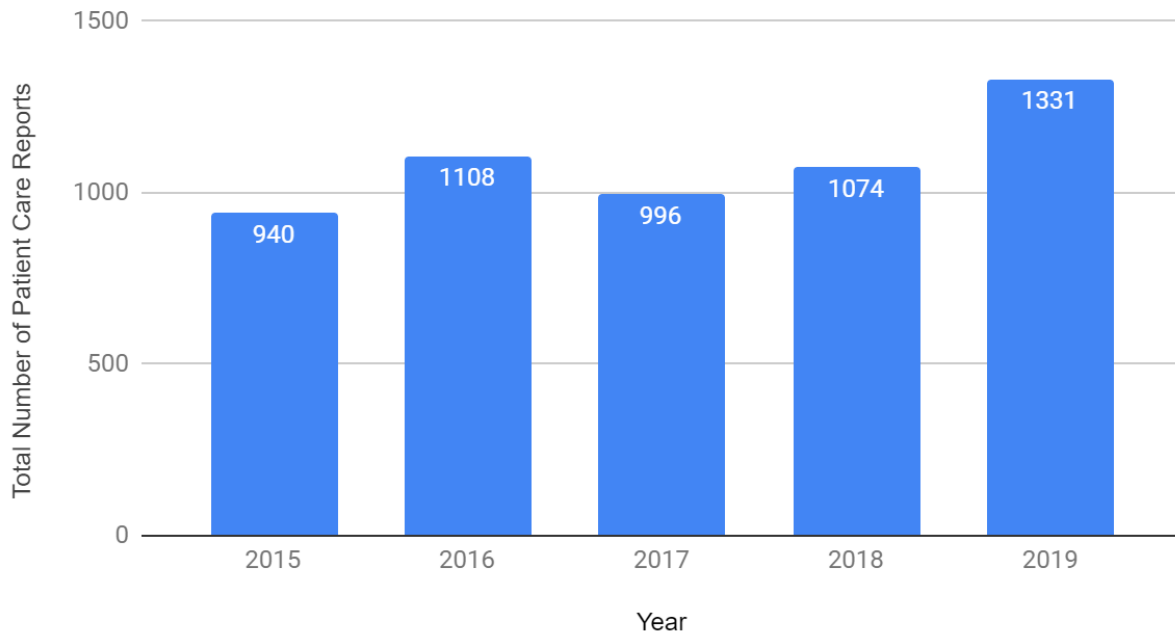
We are very active in promoting our department and ensuring the public has access to see our activities through our online accounts. We plan to launch our newly rebuilt website in late January. Additionally, we maintain a Facebook page with 1,589 followers, a Twitter account with 1,270 followers, and an Instagram account with 576 followers.



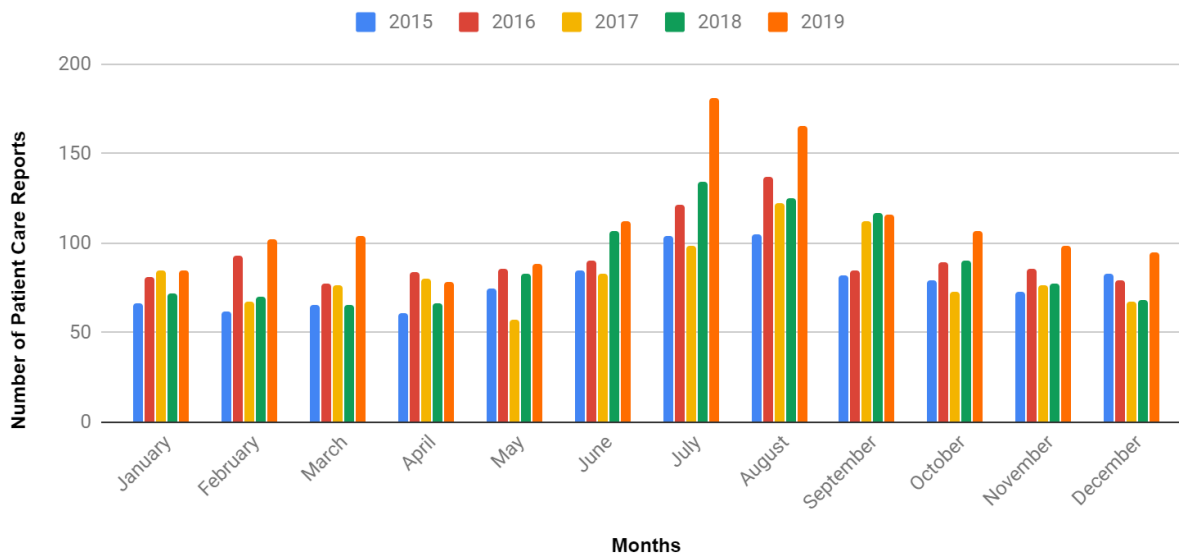
www.charlestownrescue.org

Department Statistics

Patient Care Reports Per Year



Patient Care Reports by Month



Department Statistics

Complaint Reported by Dispatch	Number of Runs	Percentage of Runs
Unknown Problem/Person Down	313	23.52%
Fall	250	18.78%
Motor Vehicle Accident (MVA)	111	8.34%
Psychiatric Problem/Suicide Attempt/Suicidal threats	99	7.44%
Difficulty Breathing	82	6.16%
Chest Pain (Non-Traumatic)	79	5.94%
Lift Assist/Invalid Assist	78	5.86%
Medical Alarm	37	2.78%
Diabetic Problem	35	2.63%
Stroke/CVA	28	2.10%
Seizures	26	1.95%
Overdose/Poisoning/Ingestion	23	1.73%
Fire Standby	21	1.58%
Assault	19	1.43%
Alcohol Intoxication	15	1.13%
Standby	12	0.90%
Transfer/Interfacility/Palliative Care	12	0.90%
Traumatic Injury	8	0.60%
Head Injury	7	0.53%
Nausea/Vomiting	7	0.53%
Pain	6	0.45%
Altered Mental Status	6	0.45%
Hemorrhage / Laceration	5	0.38%
Dehydration	4	0.30%
Syncope/Near-fainting	4	0.30%
Abdominal Pain/Problems	4	0.30%
Dizziness	3	0.23%
No Appropriate Choice (Other)	3	0.23%
Internal Illness/Sick Person	3	0.23%
Urinary problem	2	0.15%
Back Pain (Non-Traumatic)	2	0.15%
Possible DOA	2	0.15%
Walk-in (EMS Related)	2	0.15%
Assist Police with a Citizen	2	0.15%
Choking/Airway Obstruction	2	0.15%
Water Rescue	2	0.15%
Technical Rescue	2	0.15%
Cardiac Arrest	2	0.15%
(blank)	2	0.15%
Unconscious/Unresponsive/Fainting	1	0.08%
Search and Rescue	1	0.08%
Fracture	1	0.08%
Welfare Check/Well Being Check	1	0.08%
Animal Bite	1	0.08%
Burns/Explosion	1	0.08%
Allergic Reaction	1	0.08%
Motorcycle Accident	1	0.08%
Pregnancy/Childbirth/Miscarriage	1	0.08%
Industrial Accident/Other Entrapments (Non-Vehicle)	1	0.08%
Medical Transport	1	0.08%
Grand Total	1331	100.00%

Department Statistics

Run Numbers by Patient Age

Patient Age	Number of Runs	Percent of Total Runs
< 1	3	0.23%
1 - 10	20	1.50%
10 - 19	83	6.24%
20 - 29	129	9.69%
30 - 39	72	5.41%
40 - 49	85	6.39%
50 - 59	134	10.07%
60 - 69	187	14.05%
70 - 79	198	14.88%
80 - 89	245	18.41%
90 - 99	62	4.66%
Not Applicable	113	8.49%
Grand Total	1331	100.00%

Run Numbers by Day of the Week

Incident Day	Number of Runs	Percent of Total Runs
Sunday	204	15.33%
Monday	202	15.18%
Tuesday	193	14.50%
Wednesday	185	13.90%
Thursday	164	12.32%
Friday	173	13.00%
Saturday	210	15.78%
Grand Total	1331	100.00%

Department Statistics

Run Numbers by Hour of the Day

Incident Hour Range	Number of Runs	Percent of Total Runs
00:00:00 - 00:59:59	27	2.03%
01:00:00 - 01:59:59	31	2.33%
02:00:00 - 02:59:59	23	1.73%
03:00:00 - 03:59:59	18	1.35%
04:00:00 - 04:59:59	25	1.88%
05:00:00 - 05:59:59	22	1.65%
06:00:00 - 06:59:59	34	2.55%
07:00:00 - 07:59:59	53	3.98%
08:00:00 - 08:59:59	51	3.83%
09:00:00 - 09:59:59	67	5.03%
10:00:00 - 10:59:59	72	5.41%
11:00:00 - 11:59:59	66	4.96%
12:00:00 - 12:59:59	91	6.84%
13:00:00 - 13:59:59	84	6.31%
14:00:00 - 14:59:59	82	6.16%
15:00:00 - 15:59:59	77	5.79%
16:00:00 - 16:59:59	79	5.94%
17:00:00 - 17:59:59	83	6.24%
18:00:00 - 18:59:59	76	5.71%
19:00:00 - 19:59:59	83	6.24%
20:00:00 - 20:59:59	66	4.96%
21:00:00 - 21:59:59	46	3.46%
22:00:00 - 22:59:59	48	3.61%
23:00:00 - 23:59:59	27	2.03%
Grand Total	1331	100.00%

